

GÜHRING

StepPower

Drilling by hand
on a professional level.



StepPower

A must for every toolbox.

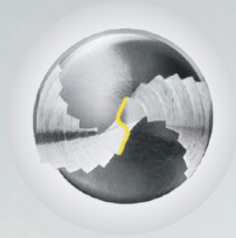
StepPower is the perfect tool for precise drilling with a cordless screwdriver or handheld drill – without punching or pre-drilling. The innovative step geometry ensures that the material is gradually removed until the desired diameter is achieved. This makes for effortless drilling without exerting force and saves battery power.

The stepped twist drill allows the drilling of virtually burr-free holes in all common materials such as hardwood, plastic or metal. The tool also easily drills composite materials.

This makes StepPower an indispensable all-rounder for every workshop and construction site.



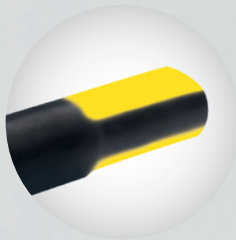
StepPower on Youtube:
convinced in less than two minutes.



Excellent self-centering pre-drilling not required – even on cylindrical surfaces thanks to the easy cutting geometry.



Effortless machining with low-burr hole exits thanks to innovative step geometry.



No slipping in the drill chuck thanks to the non-slip 3-flat shank.



Outstanding tool life even when used for higher-strength materials with the HSCO version.

Precise hand-operated holes. StepPower **performs in every industry.**



Areas of application

- window construction and assembly
- heating and air conditioning technology
- car body and vehicle manufacture
- in-house maintenance & repair (MRO)
- steel and metal construction
- mechanical and apparatus engineering
- electrical and control cabinet construction
- roof and timber construction
- stairs and railing construction

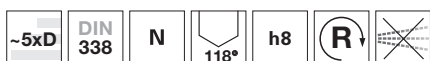


Application examples

- drilling of sheet metal and flat materials
- drilling composite materials, e.g. metal and plastic profiles
- drilling steel girders
- drilling round materials
- drilling out rivets
- drilling wood or plastic panels



Twist drill sets



| | | |
|----------|---|--------------------------------------------------------------------------------------------------------------------------------------------------------------------------------------------------------------------------------------------------|
| P | • | novel multi step drill with up to 6 steps • 118° point geometry with an optimised split point geometry for precise centering and easy cutting • 3-flats on shank prevent slipping in the chuck • exact, circular holes • perfect for hand drills |
| M | ○ | |
| K | • | |
| N | ○ | |
| S | ○ | |
| H | | |

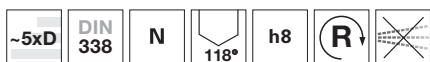
| | |
|---------------|------------|
| Tool material | HSS |
| Surface | ● |
| Shank form | cyl. |



Article no. 9501

| d1 | increasing by | Pieces/set | Order no. |
|----------|---------------|------------|------------|
| mm | mm | | |
| 1.0-10.0 | 0.5 | 19 | 9501 0.013 |
| 1.0-13.0 | 0.5 | 25 | 9501 0.014 |

Twist drill sets



| | | |
|----------|---|--------------------------------------------------------------------------------------------------------------------------------------------------------------------------------------------------------------------------------------------------------------------------------------------------|
| P | • | novel multi step drill with up to 6 steps • 118° point geometry with an optimised split point geometry for precise centering and easy cutting • 3-flats on shank prevent slipping in the chuck • 5% cobalt-HSCO steel for high wear resistance • exact, circular holes • perfect for hand drills |
| M | • | |
| K | • | |
| N | ○ | |
| S | ○ | |
| H | | |

| | |
|---------------|-------------|
| Tool material | HSCO |
| Surface | ● |
| Shank form | cyl. |



Article no. 9503

| d1 | increasing by | Pieces/set | Order no. |
|----------|---------------|------------|------------|
| mm | mm | | |
| 1.0-10.0 | 0.5 | 19 | 9503 0.013 |
| 1.0-13.0 | 0.5 | 25 | 9503 0.014 |

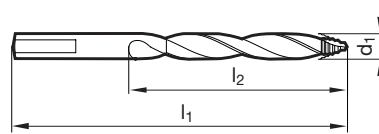
Jobber drills

 Tool material **HSS**

 Surface 

Shank form cyl.

- | | | |
|----------|---|-----------------------------------------------------------------------------------------------------------------------------------------------|
| P | • | novel multi step drill with up to 6 steps • 118° point geometry with an optimised split point geometry for precise centering and easy cutting |
| M | ○ | • 3-flats on shank prevent slipping in the chuck • exact, circular holes |
| K | • | • perfect for hand drills |
| N | ○ | |
| S | | |
| H | | |


 Article no. **9500**

| d1 | l1 | l2 | Order no. | d1 | l1 | l2 | Order no. |
|-------|-------|-------|------------|--------|--------|--------|-------------|
| mm | mm | mm | | mm | mm | mm | |
| 1.000 | 34.00 | 12.00 | 9500 1.000 | 6.500 | 101.00 | 63.00 | 9500 6.500 |
| 1.500 | 40.00 | 18.00 | 9500 1.500 | 6.800 | 109.00 | 69.00 | 9500 6.800 |
| 2.000 | 49.00 | 24.00 | 9500 2.000 | 7.000 | 109.00 | 69.00 | 9500 7.000 |
| 2.500 | 57.00 | 30.00 | 9500 2.500 | 7.500 | 109.00 | 69.00 | 9500 7.500 |
| 3.000 | 61.00 | 33.00 | 9500 3.000 | 8.000 | 117.00 | 75.00 | 9500 8.000 |
| 3.200 | 65.00 | 36.00 | 9500 3.200 | 8.500 | 117.00 | 75.00 | 9500 8.500 |
| 3.300 | 65.00 | 36.00 | 9500 3.300 | 9.000 | 125.00 | 81.00 | 9500 9.000 |
| 3.500 | 70.00 | 39.00 | 9500 3.500 | 9.500 | 125.00 | 81.00 | 9500 9.500 |
| 4.000 | 75.00 | 43.00 | 9500 4.000 | 10.000 | 133.00 | 87.00 | 9500 10.000 |
| 4.100 | 75.00 | 43.00 | 9500 4.100 | 10.200 | 133.00 | 87.00 | 9500 10.200 |
| 4.200 | 75.00 | 43.00 | 9500 4.200 | 10.500 | 133.00 | 87.00 | 9500 10.500 |
| 4.500 | 80.00 | 47.00 | 9500 4.500 | 11.000 | 142.00 | 94.00 | 9500 11.000 |
| 4.900 | 86.00 | 52.00 | 9500 4.900 | 11.500 | 142.00 | 94.00 | 9500 11.500 |
| 5.000 | 86.00 | 52.00 | 9500 5.000 | 12.000 | 151.00 | 101.00 | 9500 12.000 |
| 5.100 | 86.00 | 52.00 | 9500 5.100 | 12.500 | 151.00 | 101.00 | 9500 12.500 |
| 5.200 | 86.00 | 52.00 | 9500 5.200 | 13.000 | 151.00 | 101.00 | 9500 13.000 |
| 5.500 | 93.00 | 57.00 | 9500 5.500 | | | | |
| 6.000 | 93.00 | 57.00 | 9500 6.000 | | | | |



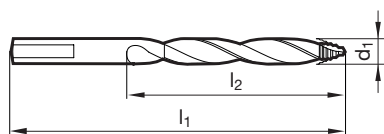
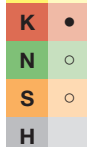
Jobber drills

Tool material **HSCO**

Surface

Shank form cyl.

- P** • novel multi step drill with up to 6 steps • 118° point geometry with an optimised split point geometry for precise centering and easy cutting •
- M** • 3-flats on shank prevent slipping in the chuck • 5% cobalt-HSCO steel for high wear resistance • exact, circular holes • perfect for hand drills

Article no. **9502**

| d1 | l1 | l2 | Order no. | d1 | l1 | l2 | Order no. |
|-------|-------|-------|------------|--------|--------|--------|-------------|
| mm | mm | mm | | mm | mm | mm | |
| 1.000 | 34.00 | 12.00 | 9502 1.000 | 6.500 | 101.00 | 63.00 | 9502 6.500 |
| 1.500 | 40.00 | 18.00 | 9502 1.500 | 6.800 | 109.00 | 69.00 | 9502 6.800 |
| 2.000 | 49.00 | 24.00 | 9502 2.000 | 7.000 | 109.00 | 69.00 | 9502 7.000 |
| 2.500 | 57.00 | 30.00 | 9502 2.500 | 7.500 | 109.00 | 69.00 | 9502 7.500 |
| 3.000 | 61.00 | 33.00 | 9502 3.000 | 8.000 | 117.00 | 75.00 | 9502 8.000 |
| 3.200 | 65.00 | 36.00 | 9502 3.200 | 8.500 | 117.00 | 75.00 | 9502 8.500 |
| 3.300 | 65.00 | 36.00 | 9502 3.300 | 9.000 | 125.00 | 81.00 | 9502 9.000 |
| 3.500 | 70.00 | 39.00 | 9502 3.500 | 9.500 | 125.00 | 81.00 | 9502 9.500 |
| 4.000 | 75.00 | 43.00 | 9502 4.000 | 10.000 | 133.00 | 87.00 | 9502 10.000 |
| 4.100 | 75.00 | 43.00 | 9502 4.100 | 10.200 | 133.00 | 87.00 | 9502 10.200 |
| 4.200 | 75.00 | 43.00 | 9502 4.200 | 10.500 | 133.00 | 87.00 | 9502 10.500 |
| 4.500 | 80.00 | 47.00 | 9502 4.500 | 11.000 | 142.00 | 94.00 | 9502 11.000 |
| 4.900 | 86.00 | 52.00 | 9502 4.900 | 11.500 | 142.00 | 94.00 | 9502 11.500 |
| 5.000 | 86.00 | 52.00 | 9502 5.000 | 12.000 | 151.00 | 101.00 | 9502 12.000 |
| 5.100 | 86.00 | 52.00 | 9502 5.100 | 12.500 | 151.00 | 101.00 | 9502 12.500 |
| 5.200 | 86.00 | 52.00 | 9502 5.200 | 13.000 | 151.00 | 101.00 | 9502 13.000 |
| 5.500 | 93.00 | 57.00 | 9502 5.500 | | | | |
| 6.000 | 93.00 | 57.00 | 9502 6.000 | | | | |

DRILLING

MILLING

THREADING

REAMING

COUNTERSINKING / DEBURRING

DEEP HOLE DRILLING

PCD / PCBN

GROOVING SYSTEMS

END MACHINING

CLAMPING SYSTEMS

SPECIAL TOOLS

SERVICES



since 1898

GÜHRING

P.O. Box 100247 • 72423 Albstadt
Herderstrasse 50-54 • 72458 Albstadt
Germany

T +49 74 31 17-0
F +49 74 31 17-21 279

info@guehring.de
www.guehring.com

No liability can be accepted for printing errors or technical changes of any kind.
Our Conditions of Sale and Terms of Payment apply. Available on request.