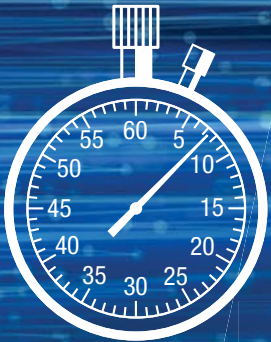


# Smart Setting Motion Tools

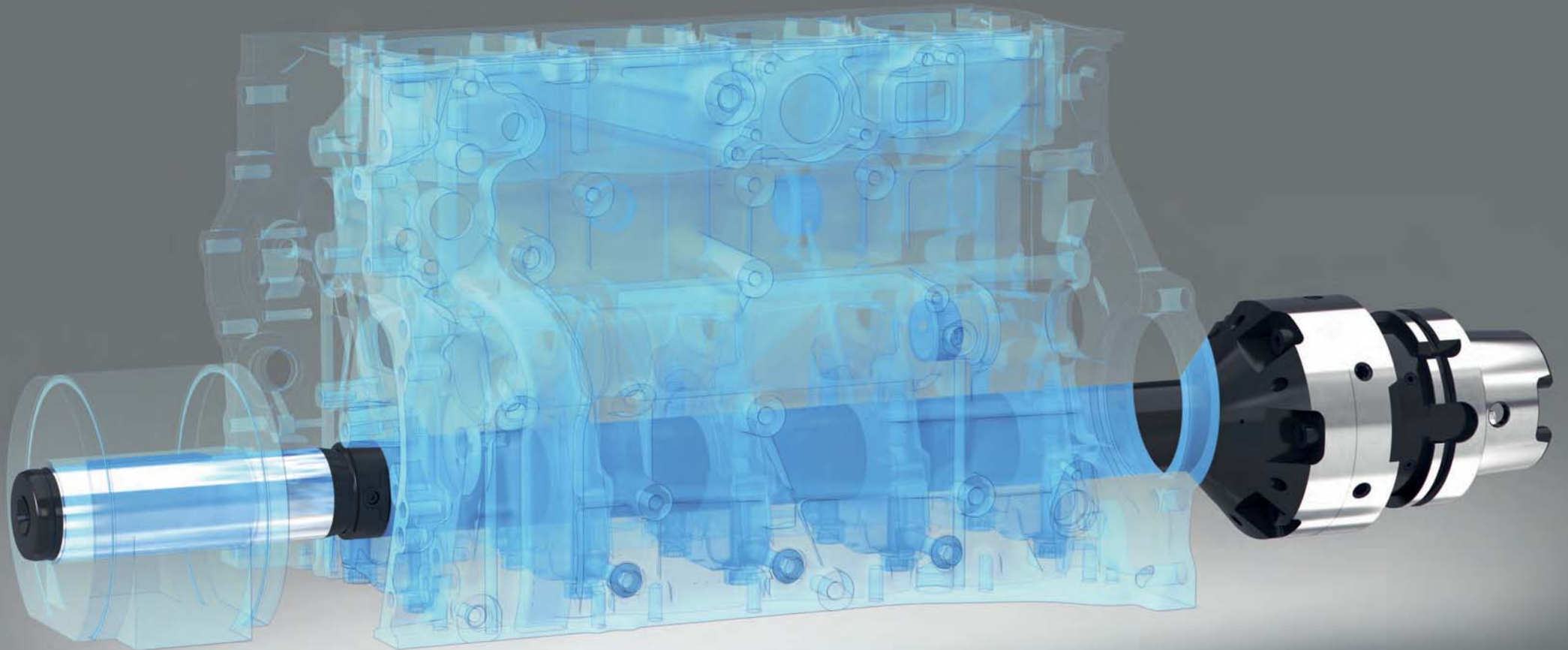
**H**  
HOLLFELDER  
GÜHRING  
CUTTING TOOLS



Pre-setting and re-adjusting of inserts  
within seconds



# ***Crankshaft*** ***bearing seat*** ***machining***



Individual fine adjustment of all finishing inserts. One graduation line equals 0.002 mm in diameter (fig. 1)

**Diameter adjustment in both directions, plus and minus**

No special equipment required for pre-setting (i.e. V-gauges)

Cartridges available with eccentric adjustment, also available with standard ISO insert

Retraction of the inserts via drawbar, therefore no workpiece adjustment required (fig. 2)

Mechanical operation, using either compressed air or machine coolant

**Time saving of more than 90% per setting cycle**

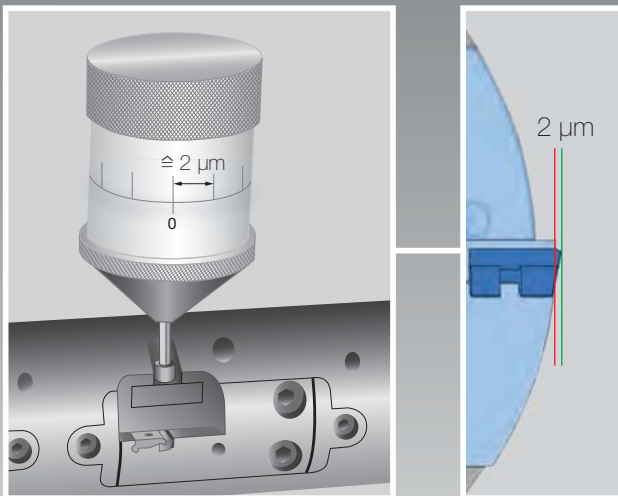
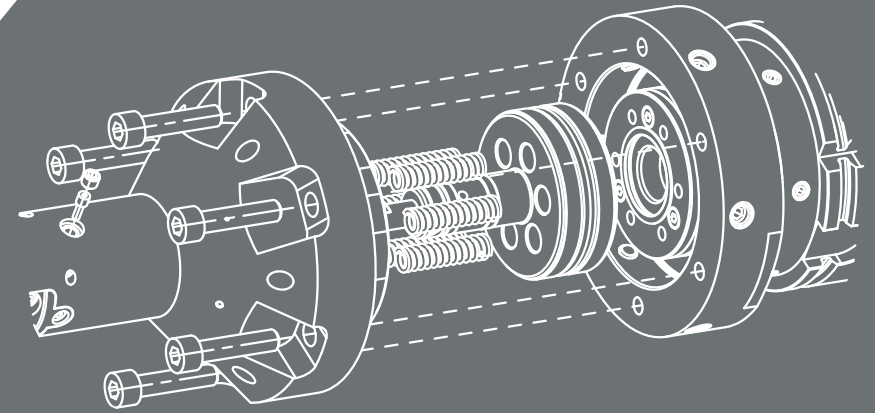


Fig. 1 – Individual micro-adjustment

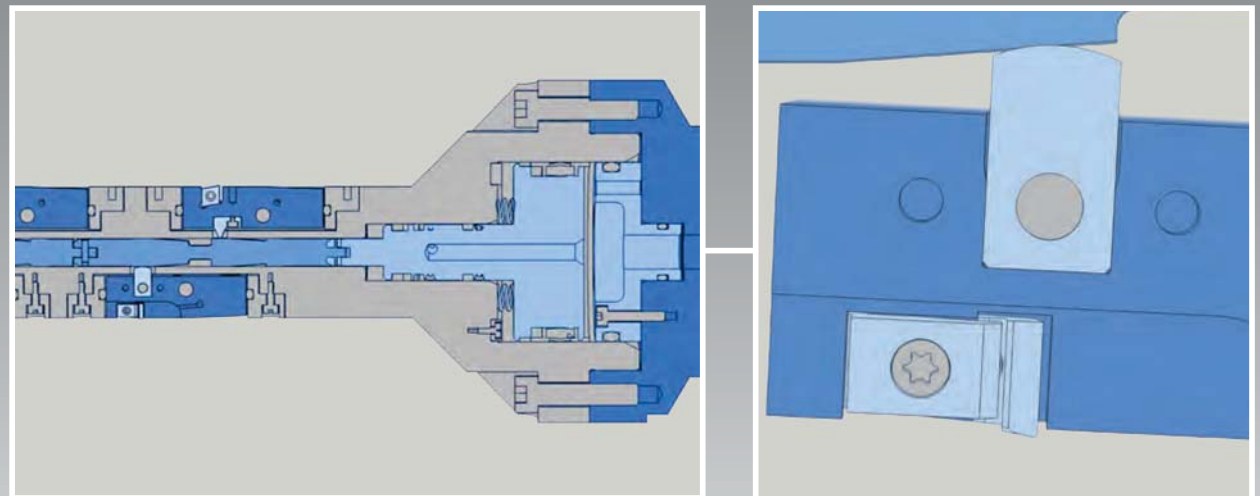
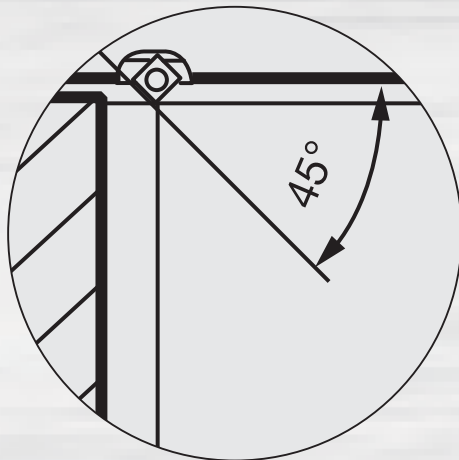
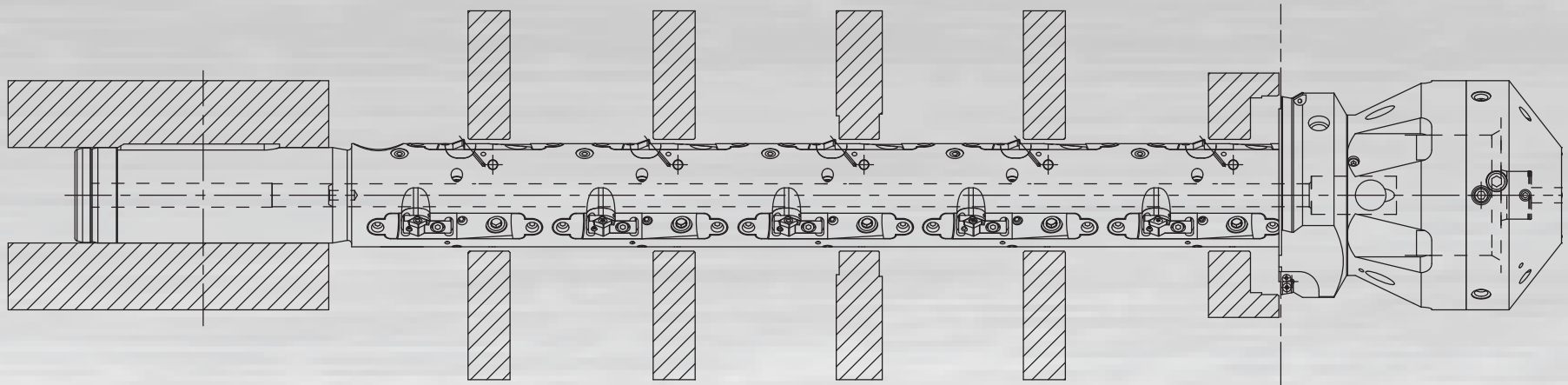


Fig. 2 – Retracting the inserts

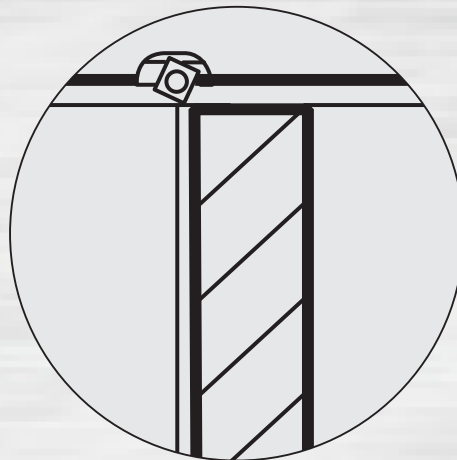
# Crankshaft bearing seat machining

## Pre- and finish-machining including chamfers

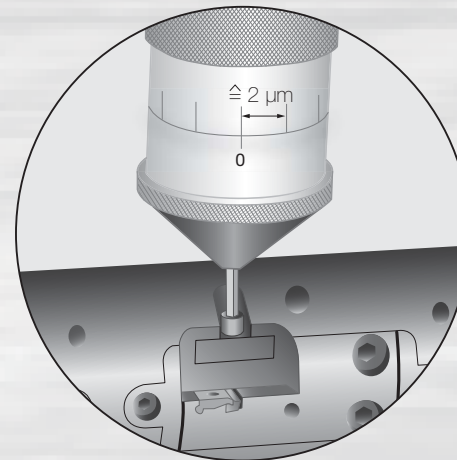
Concept with counter-bearing, SSMT-micro-adjustment and drawbar for insert retraction



Chamfer machining



Diameter machining



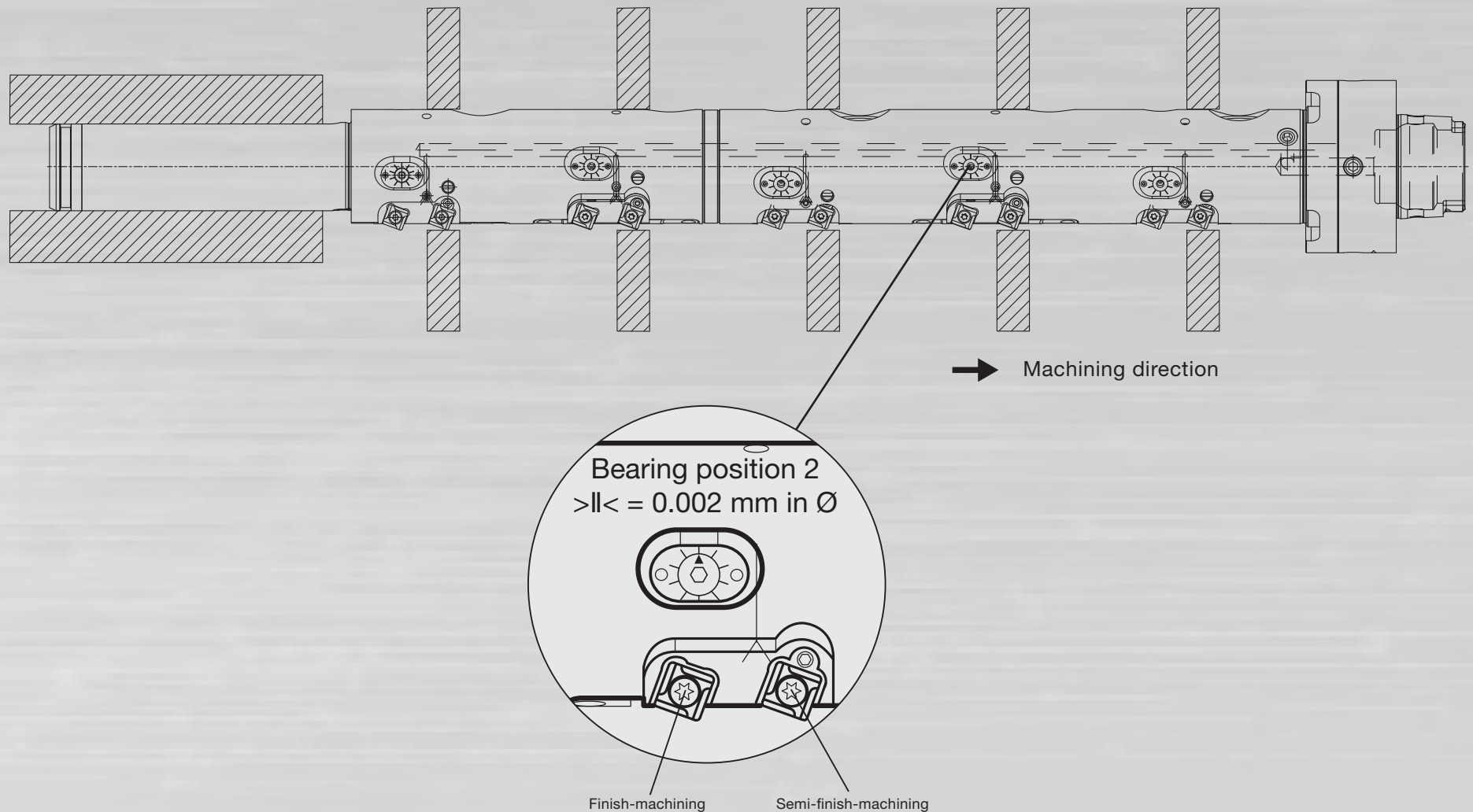
▶ Scan QR-code to watch film.



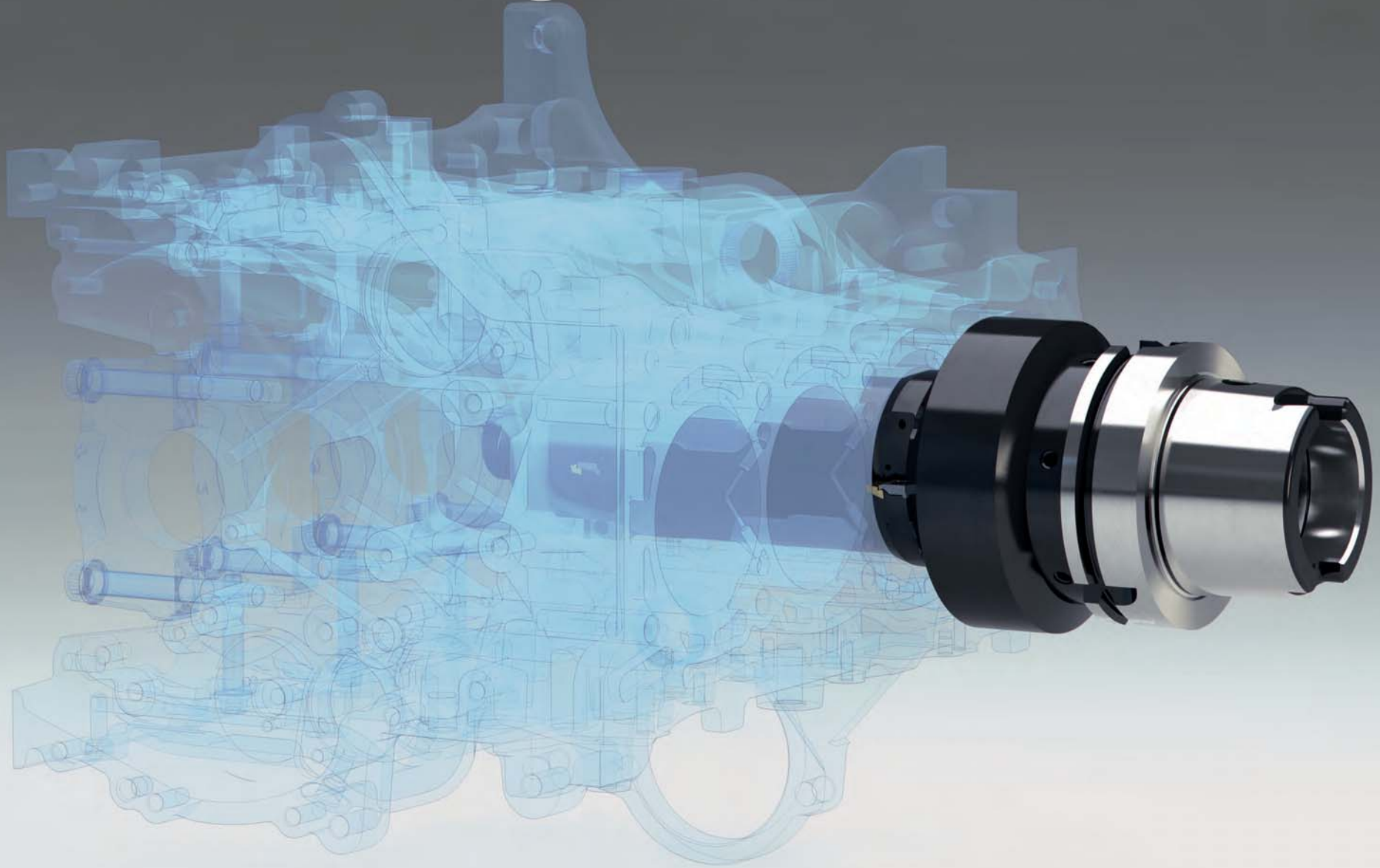
# Crankshaft bearing seat machining

## Finish-machining in two steps

Concept with workpiece adjustment, counter-bearing and SSMT-micro-adjustment



# ***Cylinder bore*** ***machining***



Simple pre-setting without special equipment

Cartridges available with eccentric adjustment, also available with standard ISO insert

**Diameter adjustment in both directions, plus and minus via central adjustment screw**

Automatic readjustment if required. One rotation equals 0.03 mm on radius (*fig. 1*)

Retracting of the finishing cartridge by means of compressed air (*fig. 2*)

Expanding of the finishing cartridge inside the honing undercut



Different adjustment screws

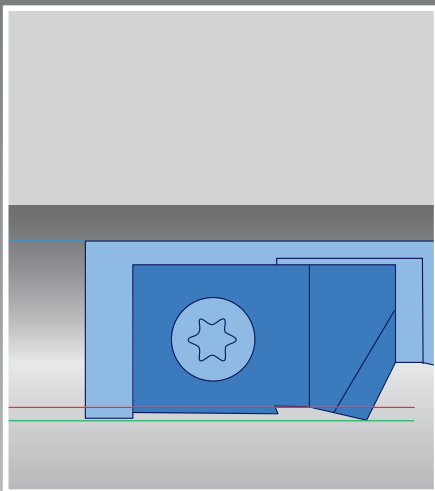


Fig. 1 – Automatic readjustment capability

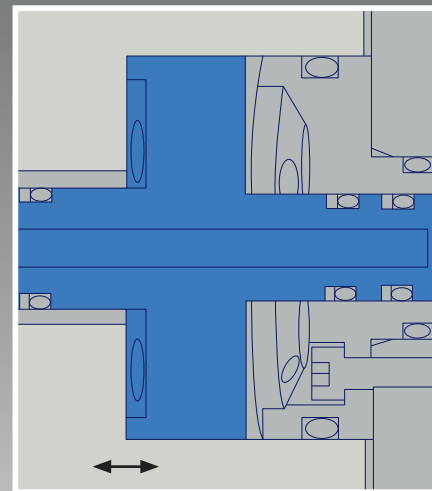
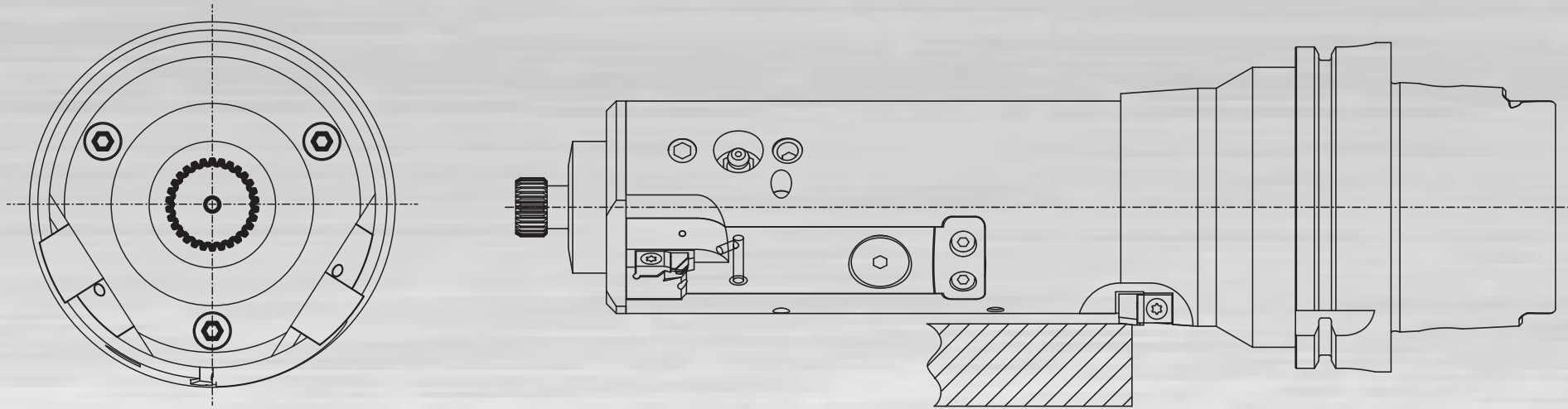


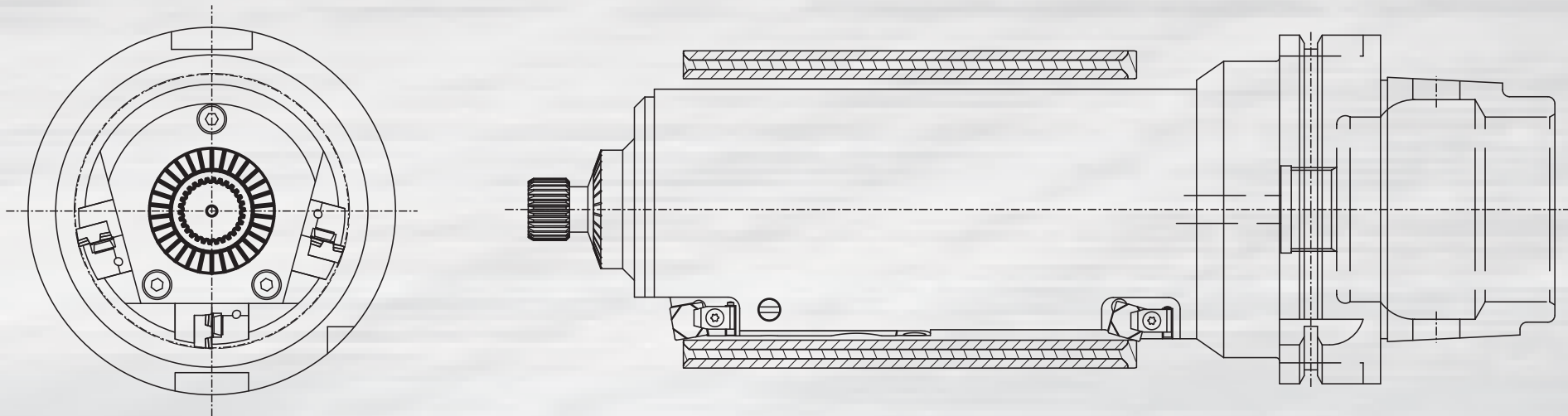
Fig. 2 – Retracting inserts integrated drawbar

# Cylinder bore machining with central micro-adjustment

Concept with central SSMT-micro-adjustment, 2 teeth / „backwards machining“, alternative 1 tooth / 3 teeth



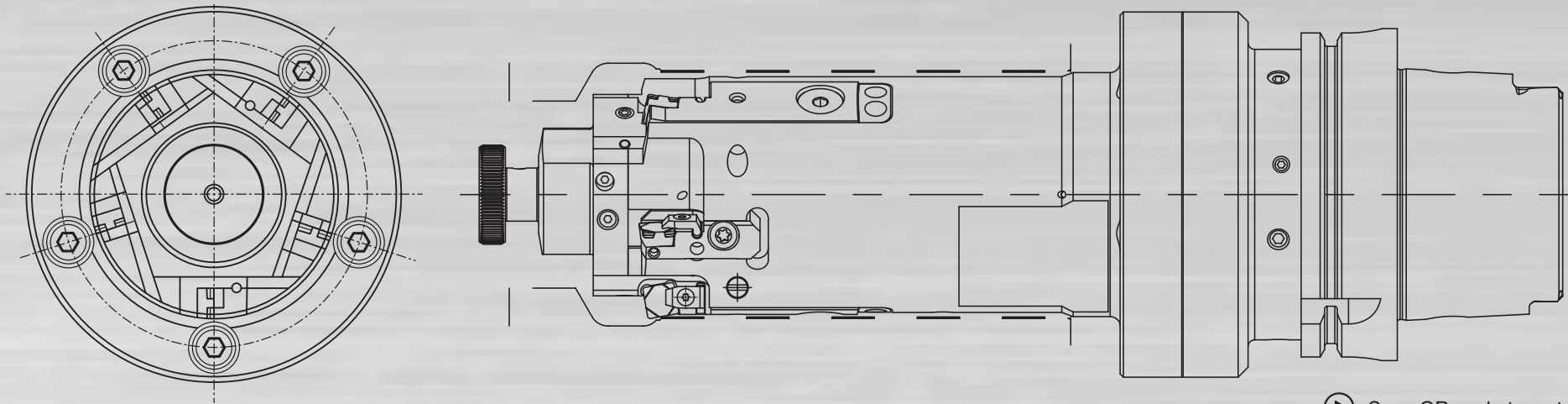
Concept with central SSMT-micro-adjustment, 3 teeth, alternative 1 tooth / 2 teeth





# *Bore machining with SSMT concept and integrated drawbar*

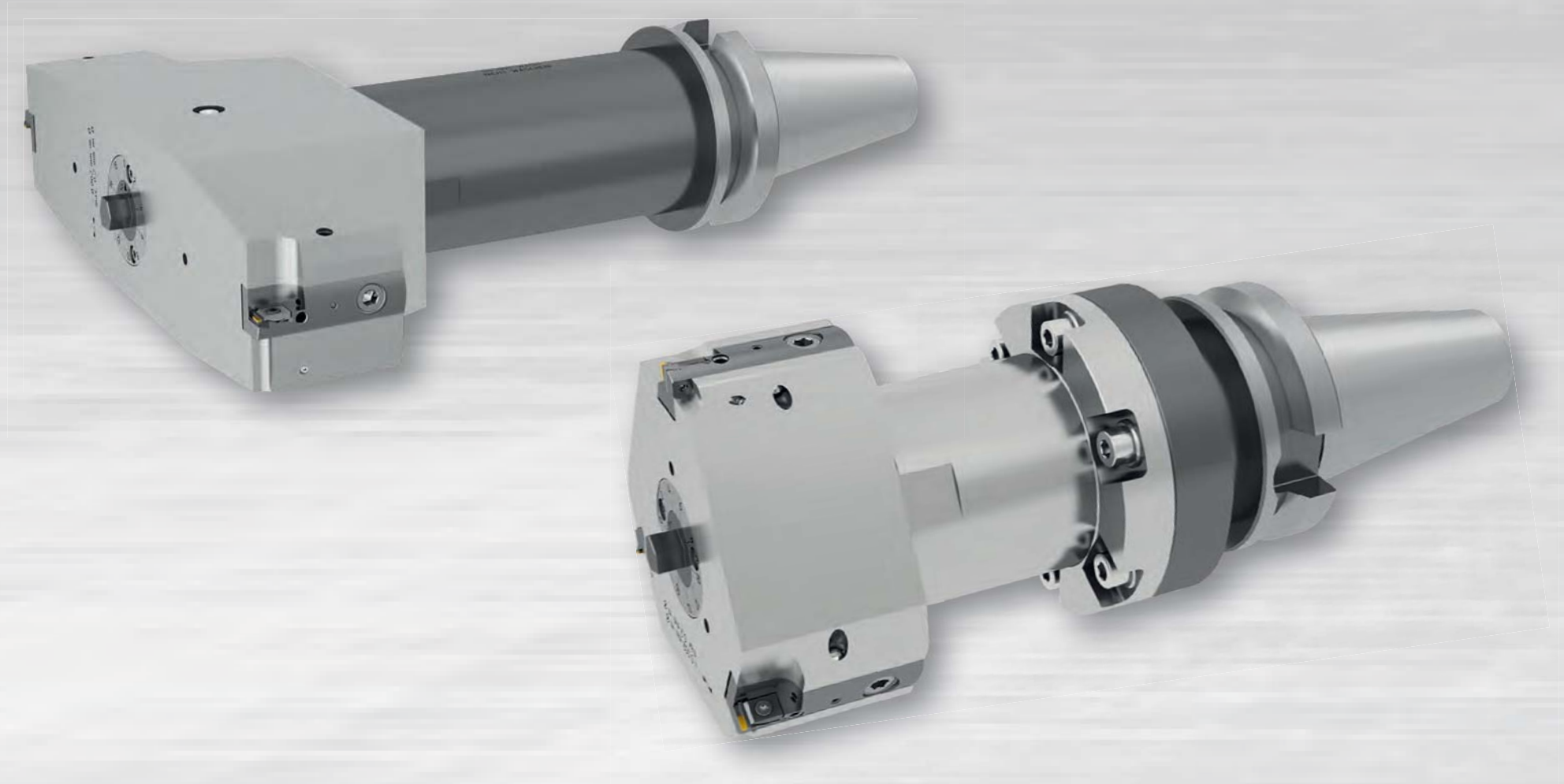
Concept with central SSMT-micro-adjustment and integrated drawbar for insert retraction  
3 teeth for semi-finish and 2 teeth for finish-machining



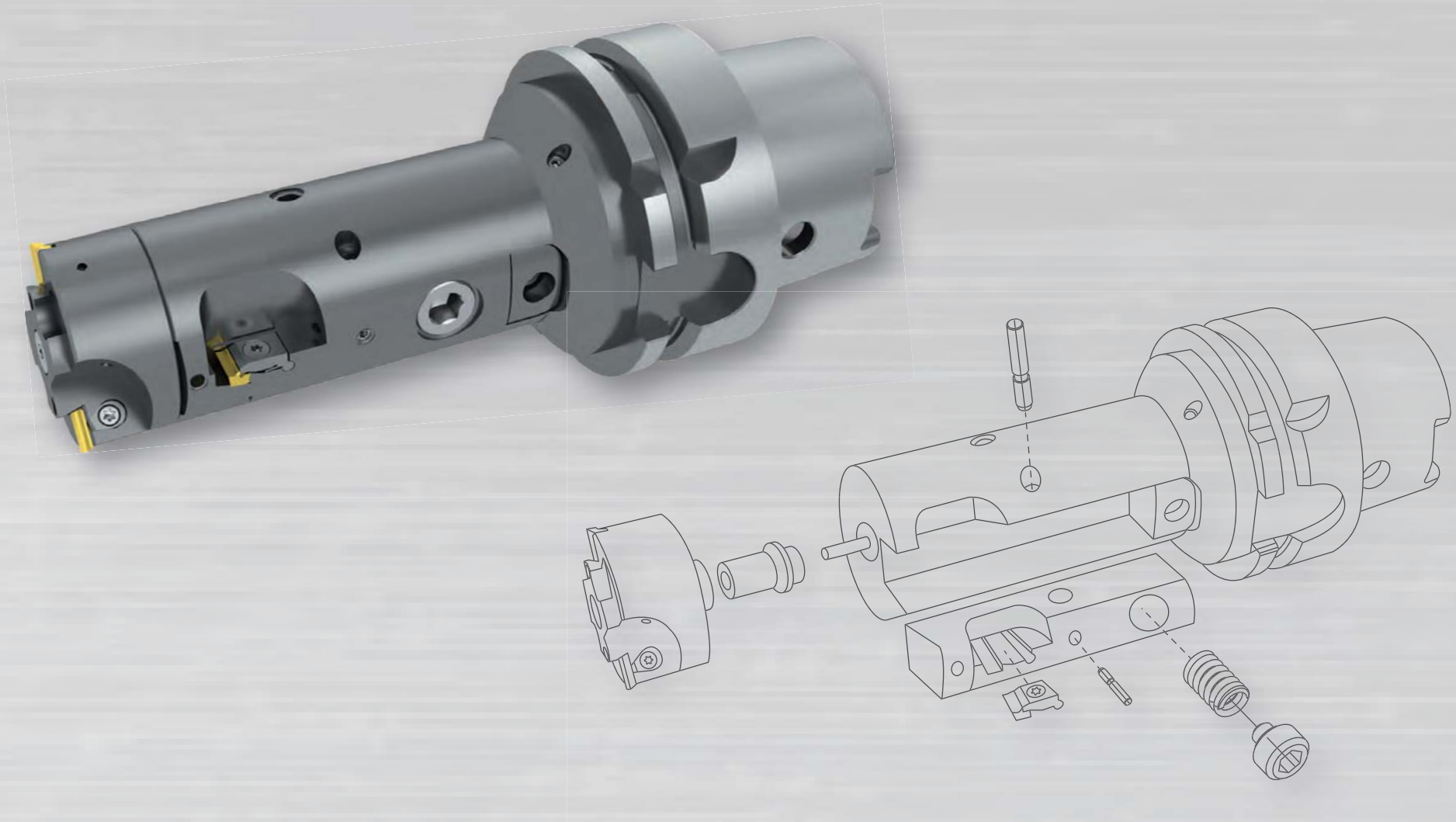
▶ Scan QR-code to watch film.



***Bore machining with central micro-adjustment  
Concept in lightweight design for larger diameters***



# ***Bore machining with central micro-adjustment Concept for semi-finish and finish-machining***



# **Smart** **Setting** **Motion** **Tools**



HOLLFELDER-GÜHRING CUTTING TOOLS

Wertachstraße 27 | D - 90451 Nürnberg | Germany  
Telefon + 49 (0) 911 / 64 19 22-0 | Fax + 49 (0) 911 / 64 19 22-10  
E-Mail: [info@hollfelder-guehring.de](mailto:info@hollfelder-guehring.de) | Internet: [www.hollfelder-guehring.de](http://www.hollfelder-guehring.de)